

# RAWBALE



suburban home study

previous house study for a project in a midwestern suburb that remains unbuilt. complete drawings with material and color selections are defined. the following study using the general floor plan from this project, shows the process incorporating a very different final result from the same plan.

rawbale - with MCA



suburban home study



interior perspective study



suburban home plan



elevation study



blue tritography



yellow tritography



red tritography

tritography™ is a digital collage art form of two or more digital photographs blended to render "unreal realities". The rational and irrational appear as one gazes at the image long enough for the mind to relax. New spaces and places appear in the depths of each project, much like an optical illusion.

rawbale - with MCA



color extraction isometric



blue color extraction



yellow color extraction



red color extraction

dominate color of each tritograph is isolated, selected and extracted from the raster images.

rawbale - with MCA



vector shapes isometric

vector shapes abstracting and emulating the color selection and extraction from tritographic digital images.

rawbale - with MCA



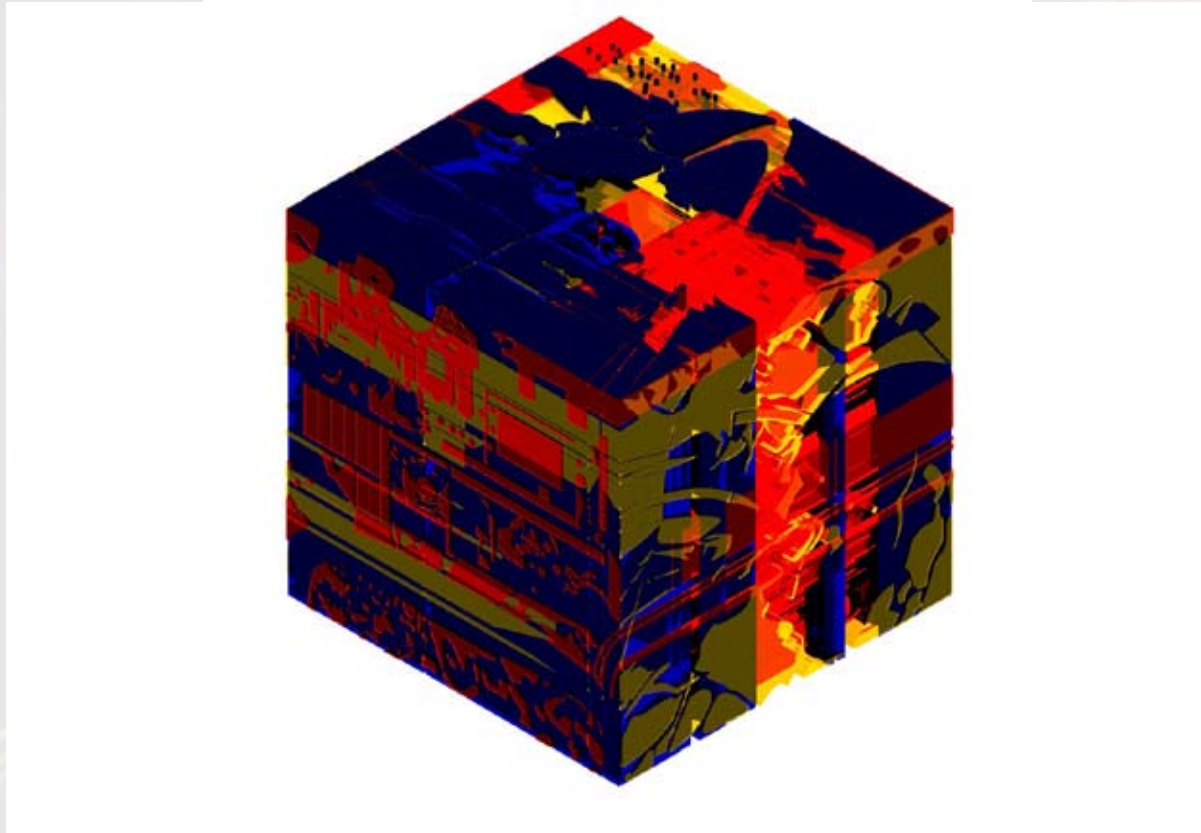
blue vector shapes



yellow vector shapes



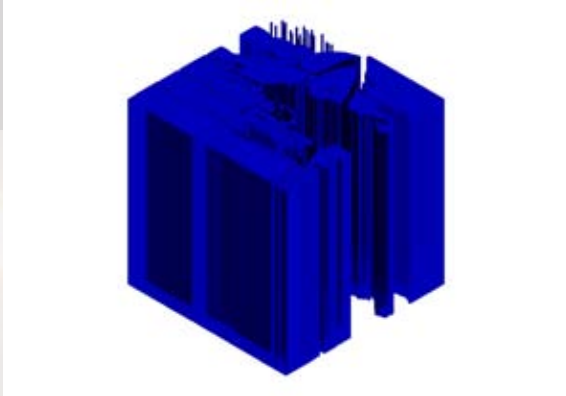
red vector shapes



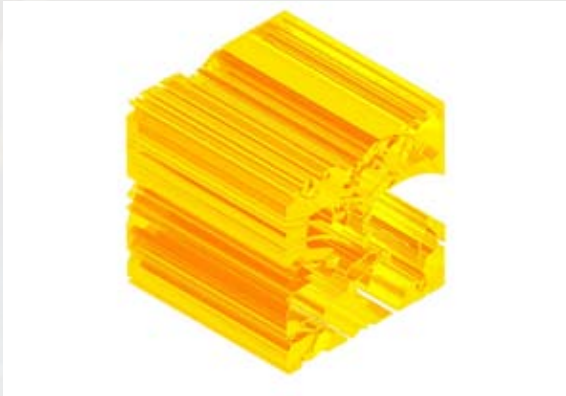
vector extrusion isometric

extrusion of vector shapes in a 60' x 60' cube and then overlaid into one cube.

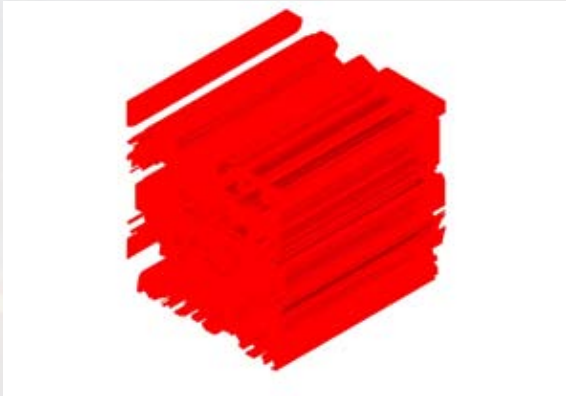
rawbale - with MCA



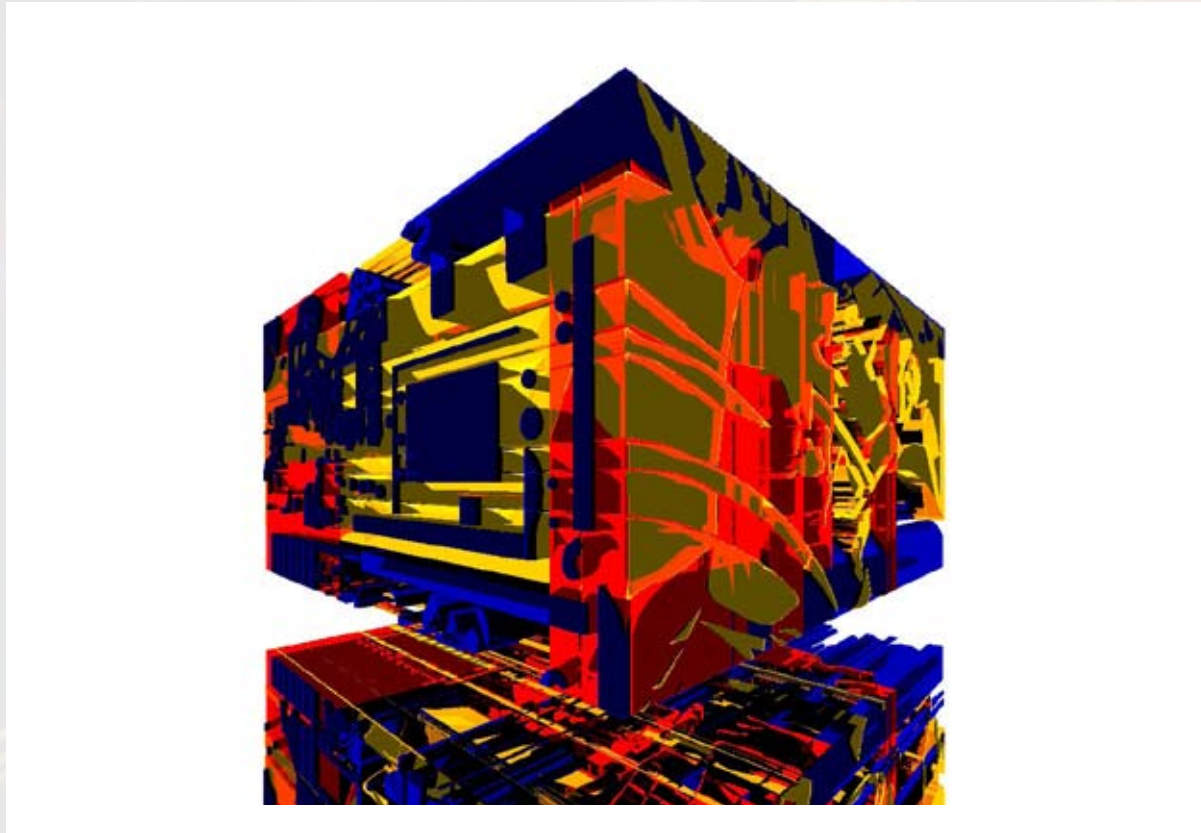
blue vector extrusion



yellow vector extrusion



red vector extrusion



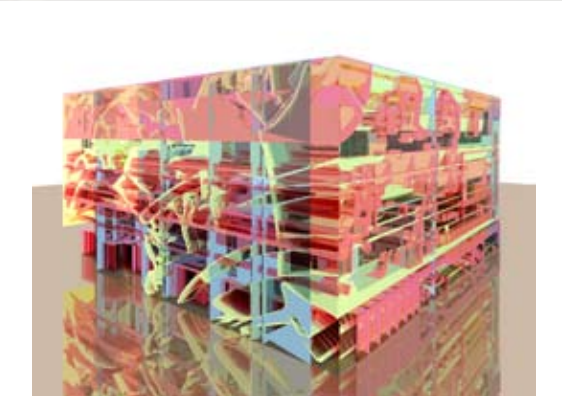
raw bale study - MCA

slicing cube in half to develop new home study 30' tall with a 60' x 60' exterior plan. the following pages walk through material studies, detailing, and landscaping of a new visual concept for a typical suburban home.

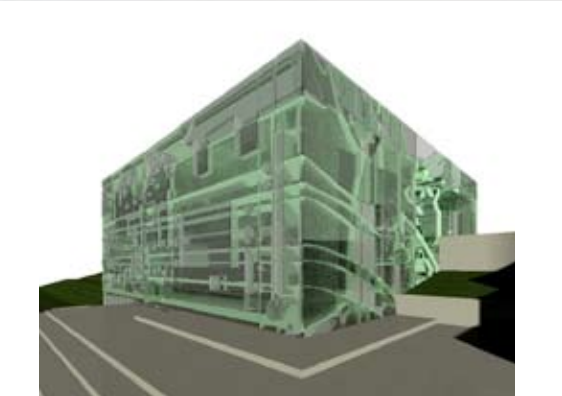
rawbale - with MCA



blue vector shapes



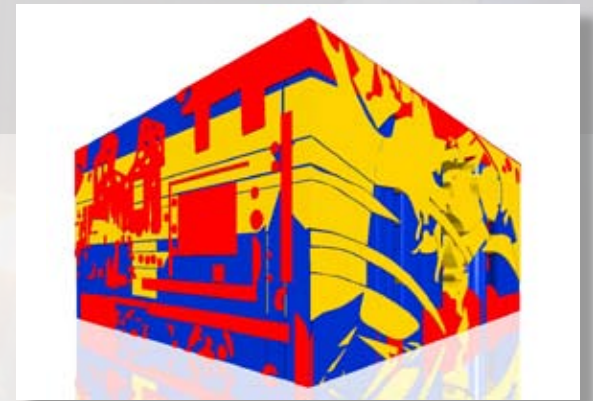
yellow vector shapes



red vector shapes



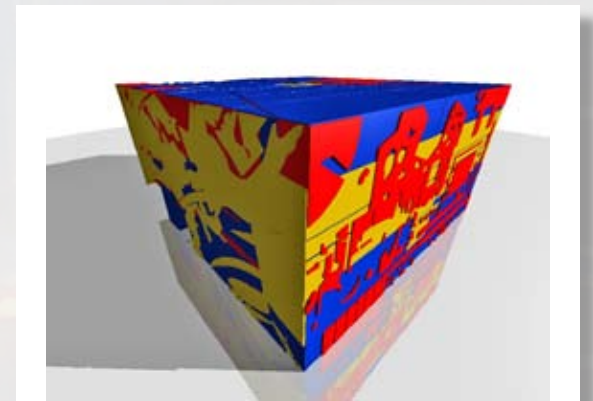
vector extrude isometric



blue vector extrude



yellow vector extrude



red vector extrude

renderings of extruded solid model generated from tritographic images.

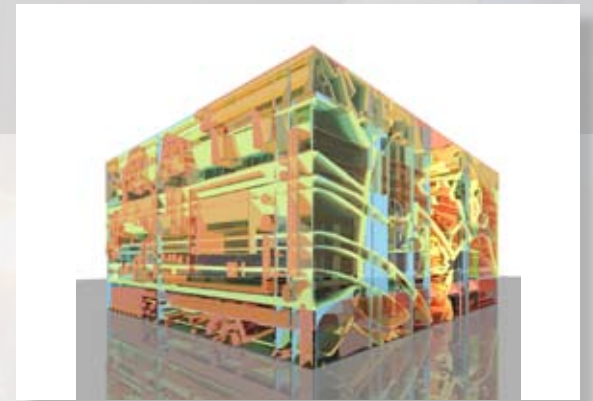
rawbale - with MCA



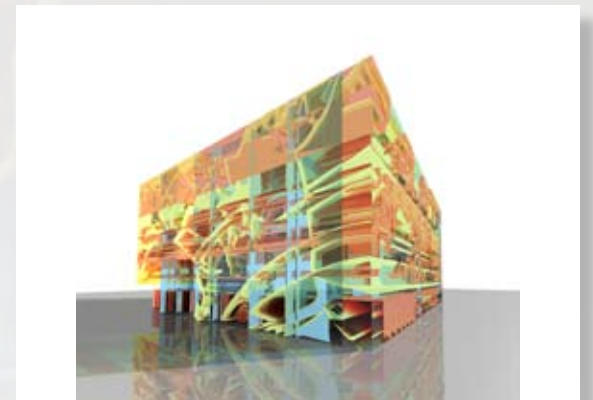
transparent extrusions study 01

extruded shapes with transparent color and material quality.

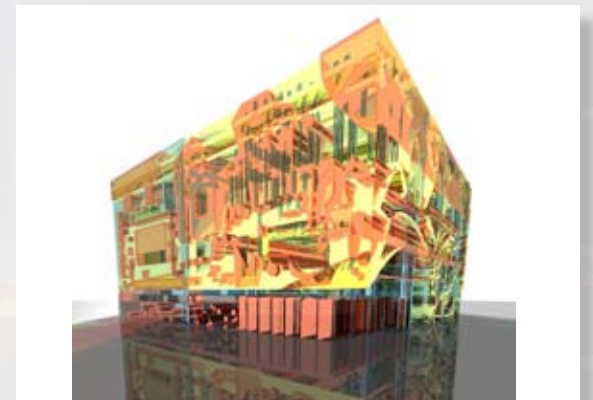
rawbale - with MCA



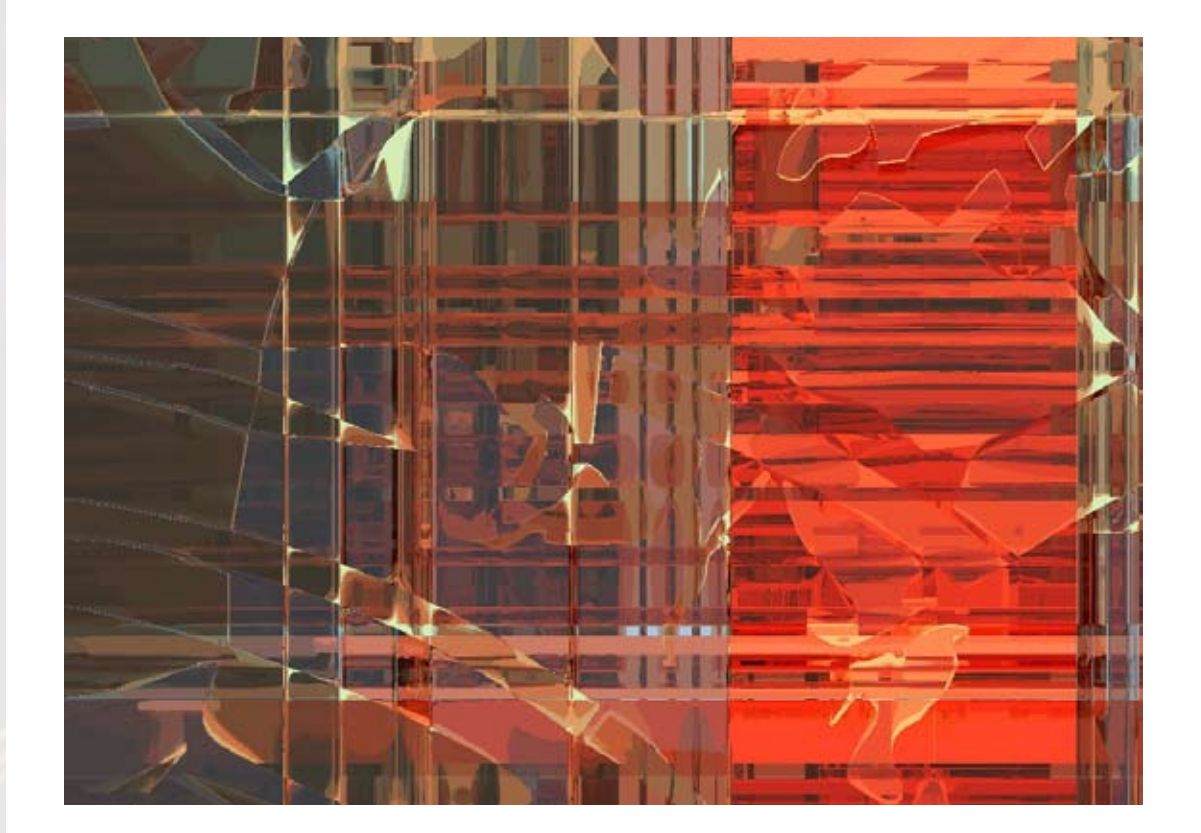
transparent extrusions study 02



transparent extrusions study 03



transparent extrusions study 04



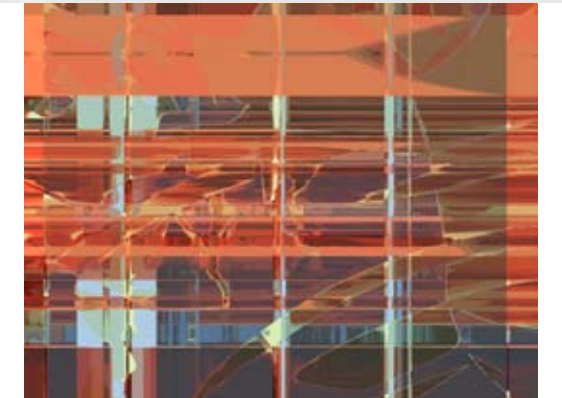
raw bale study - MCA

elevation detail studies using transparent color extrusions

rawbale - with MCA



blue vector shapes



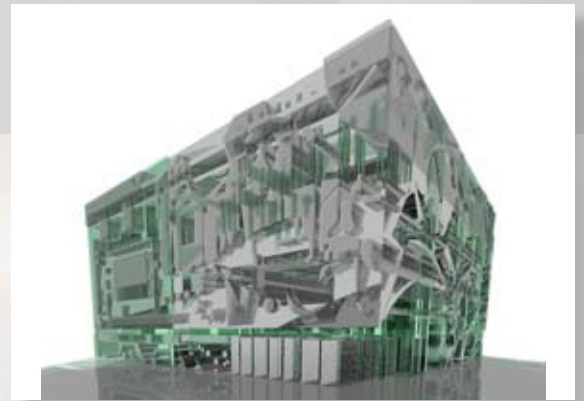
yellow vector shapes



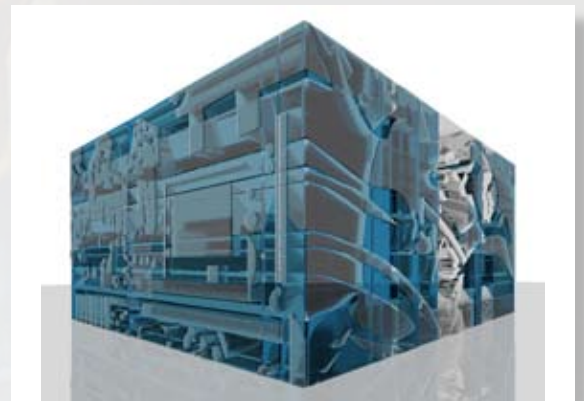
red vector shapes



material exploration 01



material exploration 02



material exploration 03



material exploration 04

exploring material combinations for color and shape.

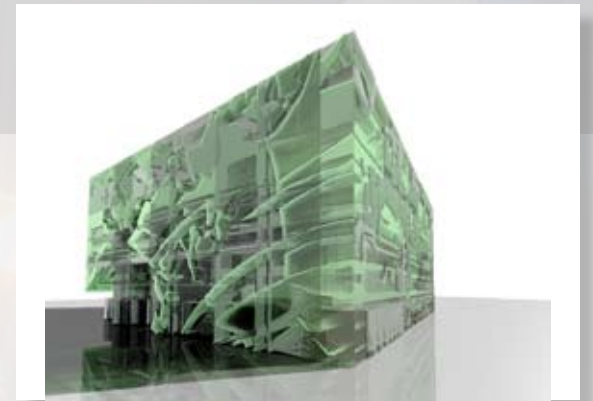
rawbale - with MCA



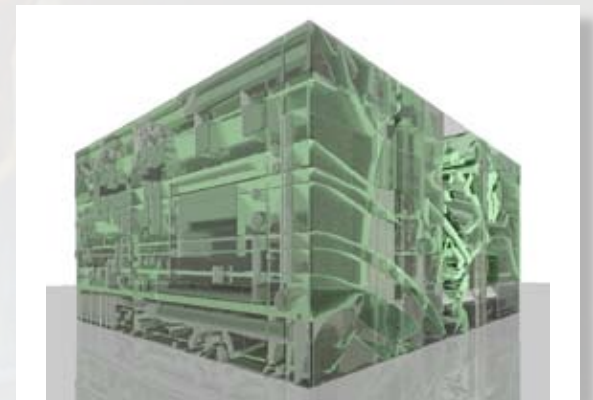
perspective 01

views suggesting concrete, steel mesh, and green glass for the house exterior.

rawbale - with MCA



perspective 02



perspective 03



perspective 04



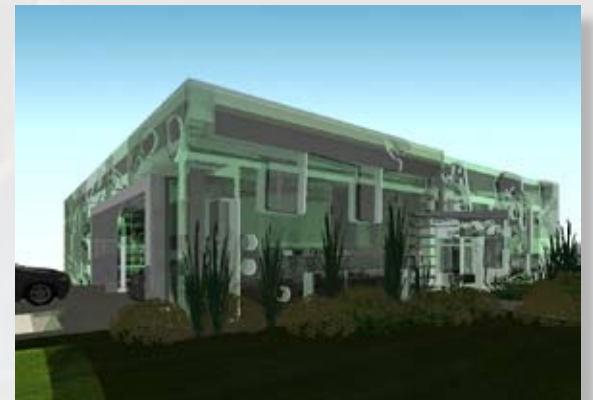
exterior perspective 01

trim, details, terraces, and landscaping add human scale to the glass house.

rawbale - with MCA



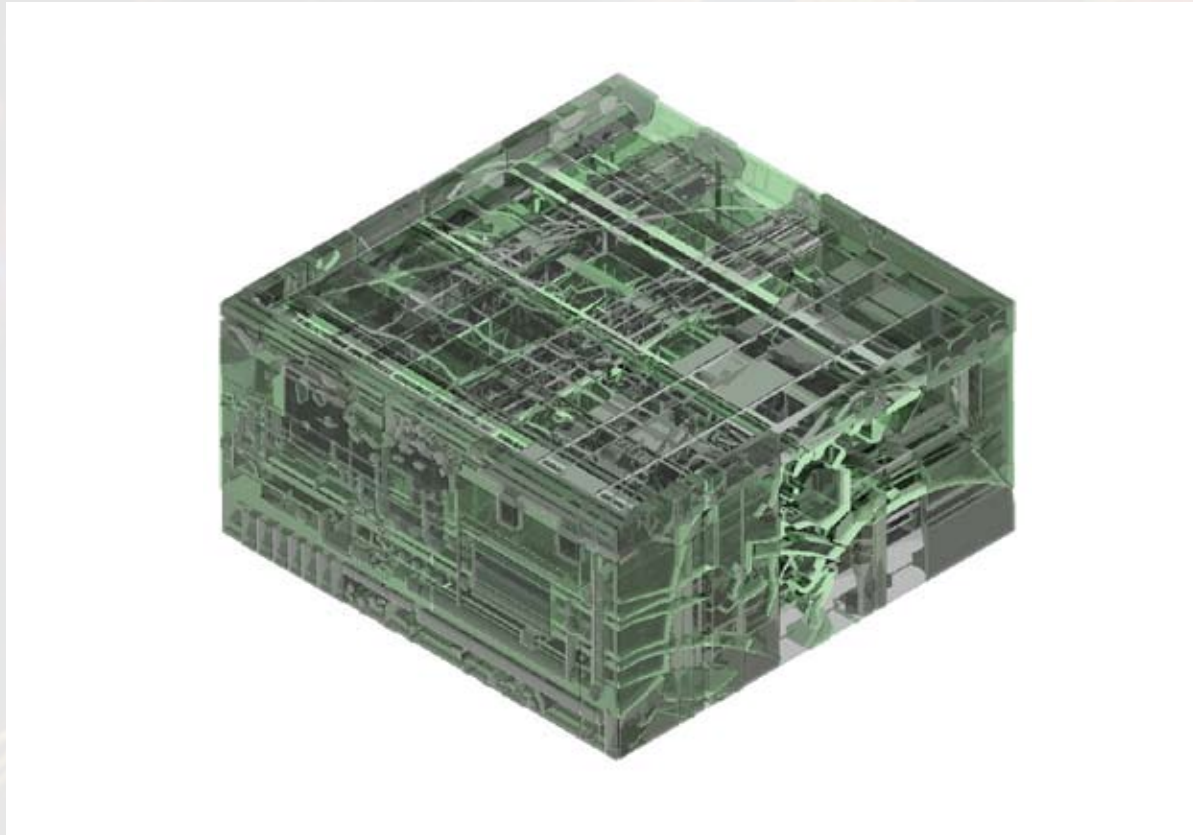
exterior perspective 02



exterior perspective 03



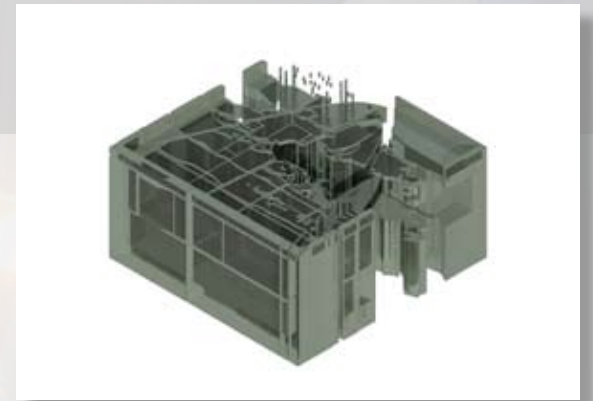
exterior perspective 04



combination of carved rooms

extruded shapes have rooms carved away leaving a glass cave to explore inside.

rawbale - with MCA



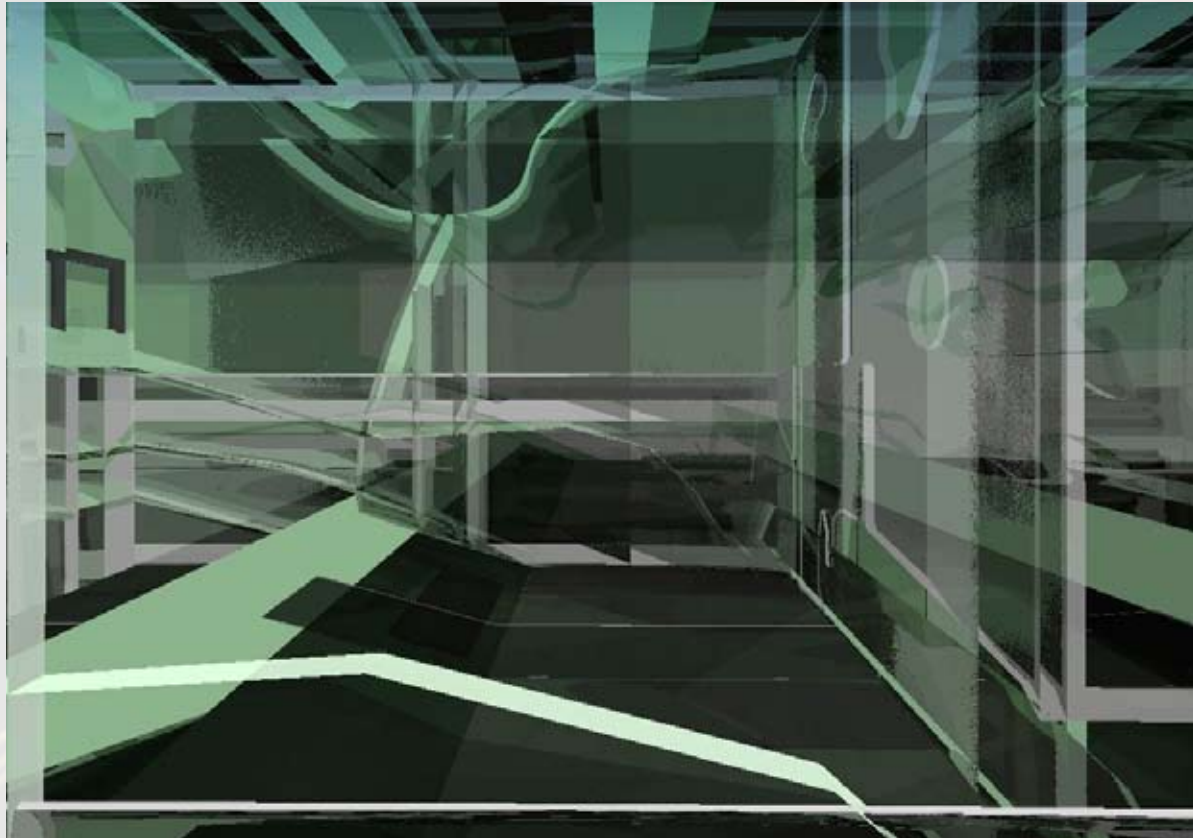
blue extrusion carved rooms



yellow extrusion carved rooms



red extrusion carved rooms



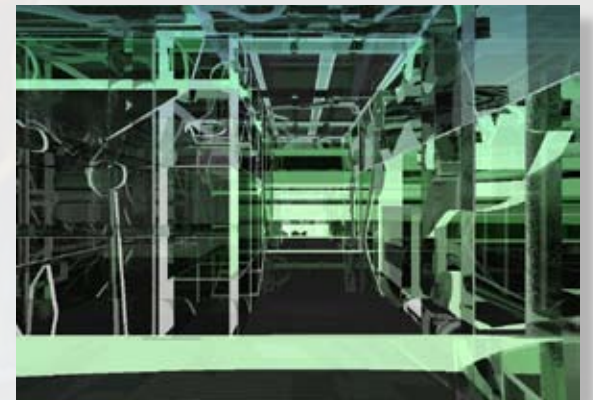
carved room perspective 01

rooms carved out of extruded shapes.

rawbale - with MCA



carved room perspective 02



carved room perspective 03



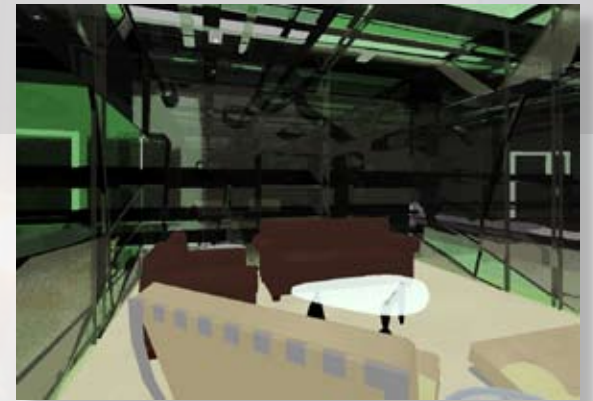
carved room perspective 04



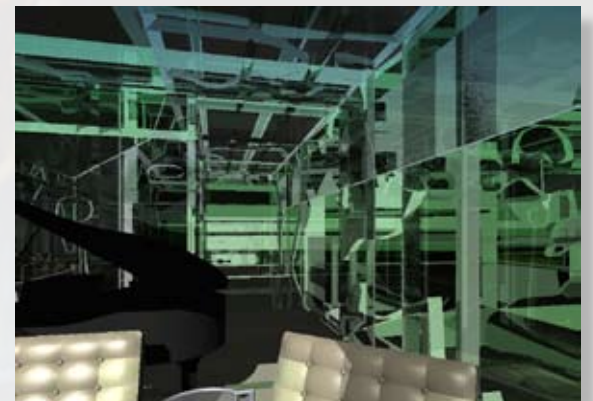
interior perspective 01

adding furniture gives a sense of scale and points of reference to the interior perspectives.

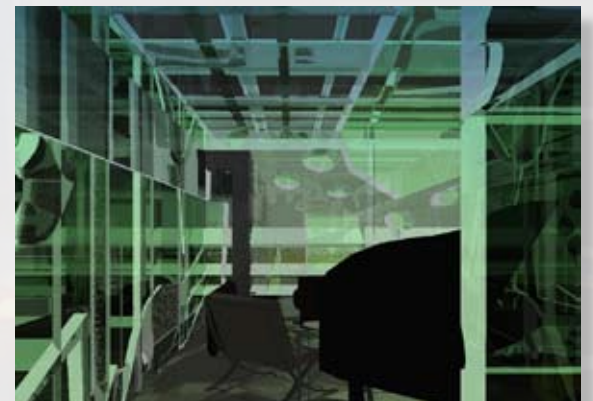
rawbale - with MCA



interior perspective 02



interior perspective 03



interior perspective 04



**The hidden harmony is better than the obvious.**

**- Pablo Picasso**